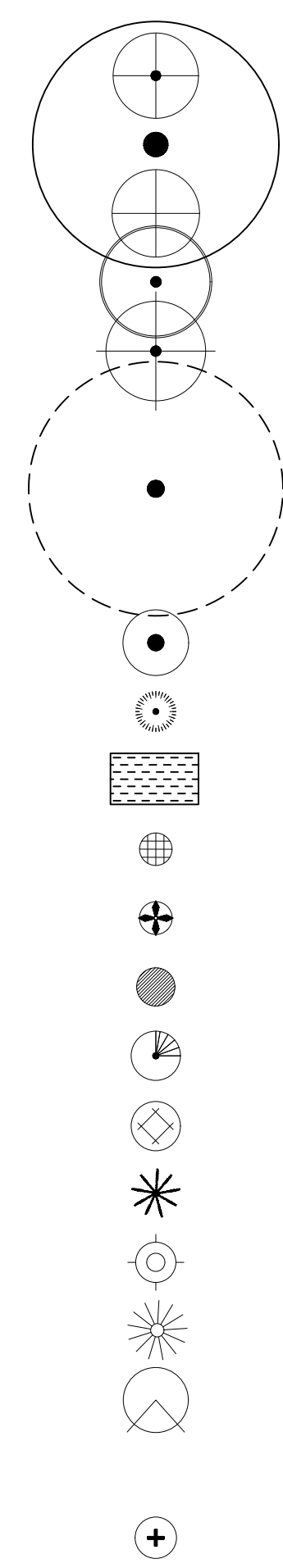


PLANT LEGEND



Small Trees & Shrubs			
<i>Capularifolius occidentalis</i> Butternut	x Gallon	11	Full Can
<i>Hydrangea arborescens</i> Smooth hydrangea	x Gallon	12	Full Can
<i>Ilex decidua</i> Possumhaw	x Gallon	5	Full Can
<i>Ilex verticillata</i> Winterberry	x Gallon	7	Full Can
<i>Physocarpus opulifolius</i> Ninebark	x Gallon	9	Full Can
<i>Rhus aromatica</i> 'Grow Low' Aromatic sumac 'Grow Low'	x Gallon	8	Full Can
Existing Trees			
Herbaceous Perennials			
<i>Amsonia hubrichtii</i> Arkansas bluestar	x Gallon	56	Full Can
<i>Asclepias incarnata</i> Swamp milkweed	x Gallon	27	Full Can
<i>Carex brevior</i> Plains oval sedge	plugs	1150 sq ft	Full Can
<i>Chasmanthium latifolium</i> Inland sea oats	x Gallon	155	Full Can
<i>Echinacea purpurea</i> Purple coneflower	x Gallon	69	Full Can
<i>Glandularia canadensis</i> Rose verbena	x Gallon	67	Full Can
<i>Hypericum hypericoides</i> St. Andrew's Cross	x Gallon	11	Full Can
<i>Hypericum prolificum</i> St. John's Wort	x Gallon	17	Full Can
<i>Juncus effusus</i> Common Rush	x Gallon	48	Full Can
<i>Lobelia cardinalis</i> Cardinal flower	x Gallon	43	Full Can
<i>Lobelia siphilitica</i> Blue lobelia	x Gallon	15	Full Can
<i>Muhlenbergia capillaris</i> Pink Muhly	x Gallon	62	Full Can
<i>Rudbeckia fulgida</i> Orange coneflower	x Gallon	92	Full Can Select by L.A.
<i>Symphoricarum oblongifolius</i> Aromatic aster	x Gallon	43	Full Can



**Preliminary Planting Plan
Lake Springdale Trailhead**



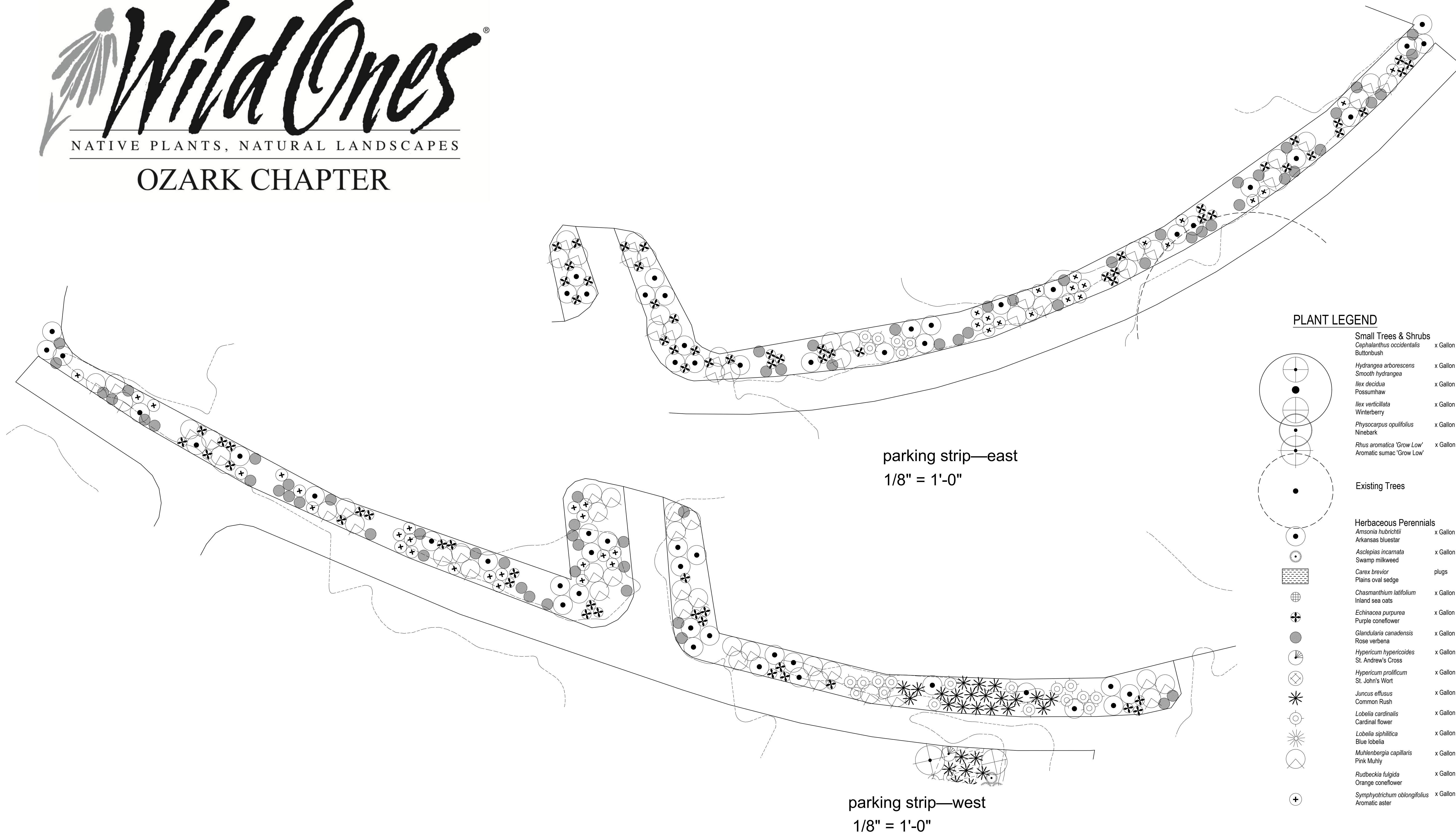
rain garden
1/4" = 1'-0"

PLANT LEGEND

Small Trees & Shrubs			
	<i>Cephalanthus occidentalis</i>	x Gallon	11 Full Can
	<i>Hydrangea arborescens</i>	x Gallon	12 Full Can
	<i>Ilex decidua</i>	x Gallon	5 Full Can
	<i>Ilex verticillata</i>	x Gallon	7 Full Can
	<i>Physocarpus opulifolius</i>	x Gallon	9 Full Can
	<i>Rhus aromatica</i> 'Grow Low'	x Gallon	8 Full Can
	Aromatic sumac 'Grow Low'		
Existing Trees			
Herbaceous Perennials			
	<i>Amsonia hubrichtii</i>	x Gallon	56 Full Can
	Arkansas bluestar		
	<i>Asclepias incarnata</i>	x Gallon	27 Full Can
	<i>Carex brevior</i>	plugs	1150 sq ft Full Can
	Plains oval sedge		
	<i>Chasmanthium latifolium</i>	x Gallon	155 Full Can
	Inland sea oats		
	<i>Echinacea purpurea</i>	x Gallon	69 Full Can
	Purple coneflower		
	<i>Glandularia canadensis</i>	x Gallon	67 Full Can
	Rose verbena		
	<i>Hypericum hypericoides</i>	x Gallon	11 Full Can
	St. Andrew's Cross		
	<i>Hypericum prolificum</i>	x Gallon	17 Full Can
	St. John's Wort		
	<i>Juncus effusus</i>	x Gallon	48 Full Can
	Common Rush		
	<i>Lobelia cardinalis</i>	x Gallon	43 Full Can
	Cardinal flower		
	<i>Lobelia siphilitica</i>	x Gallon	15 Full Can
	Blue lobelia		
	<i>Muhlenbergia capillaris</i>	x Gallon	62 Full Can
	Pink Muhly		
	<i>Rudbeckia fulgida</i>	x Gallon	92 Full Can
	Orange coneflower		Select by L.A.
	<i>Symphotrichum oblongifolius</i>	x Gallon	43 Full Can
	Aromatic aster		



**Preliminary Planting Plan
Lake Springdale Trailhead**



PLANT LEGEND

Small Trees & Shrubs			
<i>Capularanthus occidentalis</i> Buttonbush	x Gallon	11	Full Can
<i>Hydrangea arborescens</i> Smooth hydrangea	x Gallon	12	Full Can
<i>Ilex decidua</i> Possumhaw	x Gallon	5	Full Can
<i>Ilex verticillata</i> Winterberry	x Gallon	7	Full Can
<i>Physocarpus opulifolius</i> Ninebark	x Gallon	9	Full Can
<i>Rhus aromatica</i> 'Grow Low' Aromatic sumac 'Grow Low'	x Gallon	8	Full Can
Existing Trees			
Herbaceous Perennials			
<i>Amsonia hubrichtii</i> Arkansas bluestar	x Gallon	56	Full Can
<i>Asclepias incarnata</i> Swamp milkweed	x Gallon	27	Full Can
<i>Carex brevior</i> Plains oval sedge	plugs	1150 sq ft	Full Can
<i>Chasmanthium latifolium</i> Inland sea oats	x Gallon	155	Full Can
<i>Echinacea purpurea</i> Purple coneflower	x Gallon	69	Full Can
<i>Glandularia canadensis</i> Rose verbena	x Gallon	67	Full Can
<i>Hypericum hypericoides</i> St. Andrew's Cross	x Gallon	11	Full Can
<i>Hypericum prolificum</i> St. John's Wort	x Gallon	17	Full Can
<i>Juncus effusus</i> Common Rush	x Gallon	48	Full Can
<i>Lobelia cardinalis</i> Cardinal flower	x Gallon	43	Full Can
<i>Lobelia siphilitica</i> Blue lobelia	x Gallon	15	Full Can
<i>Muhlenbergia capillaris</i> Pink Muhly	x Gallon	62	Full Can
<i>Rudbeckia fulgida</i> Orange coneflower	x Gallon	92	Full Can Select by L.A.
<i>Symphoricarum oblongifolius</i> Aromatic aster	x Gallon	43	Full Can